

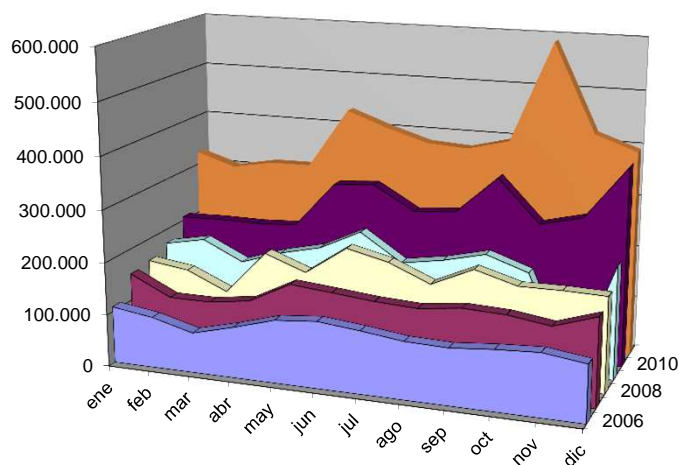


Municipalidad de Santa Ana
 Cuervina Otáño 576 - SANTA ANA
 Entre Ríos

Resumen de Coparticipaciones Nacionales (Ley 8492 y modif.) comparativa

mes	2001	2002	2003	2004	2005	2006	2007	2008	2009	2010	2011
ene	45.860,12	25.995,45	40.410,83	46.836,65	69.247,52	108.882,59	151.671,17	157.239,01	172.159,40	207.337,25	325.436,57
feb	35.153,73	25.181,05	37.722,19	69.261,32	88.297,57	97.529,27	113.961,96	146.527,83	187.621,93	209.581,67	301.156,48
mar	38.902,11	35.403,03	32.106,25	57.197,62	58.913,70	76.713,34	113.669,00	112.083,03	150.426,68	209.012,62	316.055,41
abr	42.115,31	23.613,74	36.754,60	51.303,96	87.611,87	97.048,10	124.889,26	195.825,96	176.380,27	212.872,93	317.023,66
may	45.531,07	32.455,10	48.477,95	114.312,04	102.089,78	119.928,29	165.418,30	166.933,40	194.887,05	301.677,31	432.734,48
jun	38.112,63	39.497,30	56.815,93	100.586,26	110.975,42	127.113,57	158.329,53	221.734,16	233.406,02	307.881,44	404.293,31
jul	35.861,08	30.950,02	48.240,56	69.666,69	90.221,65	119.169,51	150.669,55	203.188,65	181.473,27	262.403,60	380.387,08
ago	41.106,74	21.175,51	43.754,33	81.072,24	95.127,38	109.257,30	146.609,14	169.815,37	194.573,75	268.904,61	375.734,45
sep	35.972,18	30.610,67	55.052,15	70.757,47	85.831,95	107.121,13	156.269,16	206.268,30	214.012,67	341.577,74	396.010,44
oct	30.284,02	41.555,80	44.528,04	74.888,43	97.154,79	114.198,13	153.122,73	183.393,40	186.977,83	259.844,65	588.948,65
nov	22.796,55	35.507,53	58.987,49	78.833,61	97.746,69	118.728,98	141.663,28	184.042,39		279.639,63	420.937,03
dic	27.844,50	37.697,32	68.364,90	69.943,48	87.035,54	108.043,68	168.184,43	182.084,49	217.611,84	381.620,97	393.100,11
	439.540,04	379.642,52	571.215,22	884.659,77	1.070.253,86	1.303.733,89	1.744.457,51	2.129.135,99	2.109.530,71	3.242.354,42	4.651.817,67

Comparativa de Coparticipaciones Nacionales



Fuente: Contaduría General de Entre Ríos
 Preparado por Cr. Julio C. FOCESATTO - Jefe Depto. Contable - Municipalidad de Santa Ana